



Stephenson Area Public Schools
K-12 Announcements

Today is Tuesday, April 30, 2024

LUNCH TODAY: Pretzel and Cheese

ATTENTION HIGH SCHOOL STUDENT COUNCIL MEMBERS: There will be a High School Student Council meeting today during lunch in the library.

ATTENTION NHS MEMBERS: There will be an NHS meeting on Wednesday 5/1 during lunch in the library.

ATTENTION HEART & SOLE MEMBERS: There will be no Heart & SOLE this week. Heart & SOLE will resume on Tuesday, May 7th.

ATTENTION STAFF AND PARENTS: We are still looking for some adult volunteers for our upcoming high school track meet next Tuesday May 7th, as well as our conference meet on May 21st. Please let Renee Ruleau know if you are interested.

ATTENTION STAFF AND STUDENTS: We are conducting M-Step testing today. Please be very quiet in the upstairs hallway. The bells will be turned off.

ATHLETICS

Tuesday, April 30th

HS Track Meet away at North Dickinson starting at 3:00 PM.

Released: 12:10 PM Departure: 12:20 PM

Boys Baseball home games against North Dickinson starting at 4:00 PM.

JH Track meet away at Rapid River starting at 2:15 PM.

Released: 12:05 PM Departure: 12:15 PM

Wednesday, May 1st

Softball home games against Rapid River starting at 3:30 PM.

Released: 2:15 PM

Golf meet (boys only) away at Mid-Pen starting at 9:00 AM.

Thursday, May 2nd

HS Track Meet away at Rapid River starting at 1:30 PM.

Released: 10:35 AM Departure: 10:45 AM

Baseball home games against North Central starting at 3:30 PM.

Friday, May 3rd

Golf meet away at North Central starting at 9:00 AM.



Into the Wild

Join us for the Spring Family Dance

Who: GSRP-6 grade students and their families

Where: Stephenson School's MPR

When: Friday, May 10th

Time: 6:00 - 8:00 pm

Admission: \$1/person; \$5 max/family

Prize Raffles: \$5/5 tickets; \$20/25 tickets



A fun filled night with music, photo booth,
bucket raffles, cookies, and more!

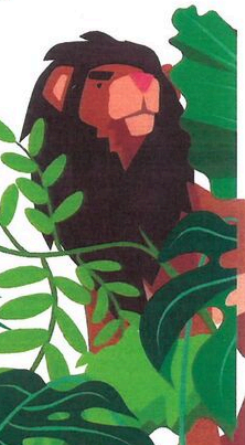


Presented by

STEPHENSON



PTO



***The Superintendents Office/Weight Room hallway is a "Nut-Free Zone."

This includes the bathrooms.

Please do not bring or eat items containing peanuts into this hallway.***